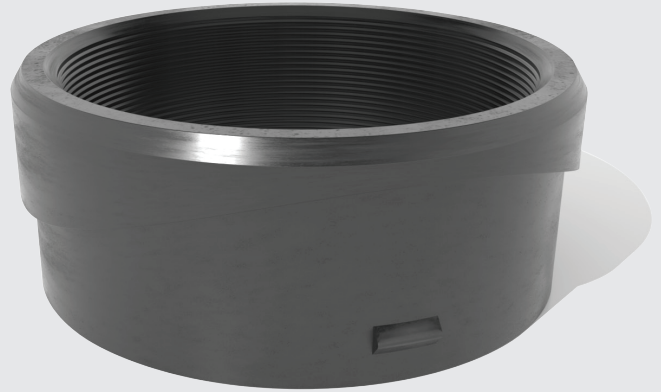


Lateral Pipe Seal

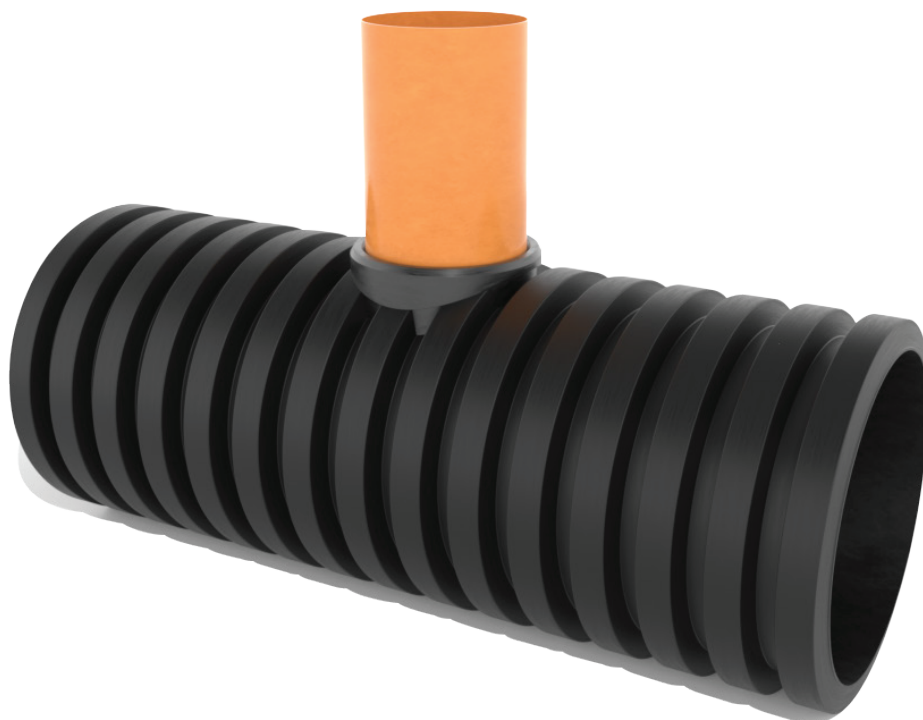
- Quick and effective Lateral Pipe Seal
- For use on new or existing Stormwater systems
- Reduces material and labour costs
- Increases positioning flexibility
- Small and lightweight, easy to transport and handle for quick installation
- Installation unaffected by weather conditions
- Extensive range allowing for larger lateral pipes to be connected

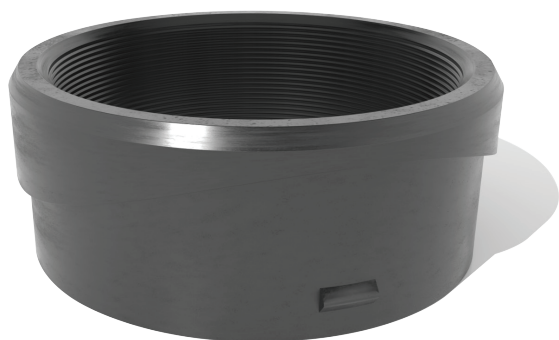


A quick and effective solution for connecting lateral pipes in to storm/rainwater pipe systems. The seal is suitable for Twinwall main host pipes or plastic/concrete chambers.

Fernco's Lateral Pipe Seal is a simple, quick and secure way to connect smooth PVC pipes laterally into main stormwater drainage systems. The Lateral Pipe Seal provides a 90° inlet into the main system, whether connecting into an existing/new host pipe or chamber.

The seal can be simply installed into a cored hole in the pipe, which will then connect a lateral pipe (or branch). The seals are manufactured using EPDM material confirming to BS EN 681 - 1 to ensure long-term reliability. The seals are also available, when required, to be made in Nitrile rubber where the effluent or ground conditions could be contaminated with hydrocarbons.



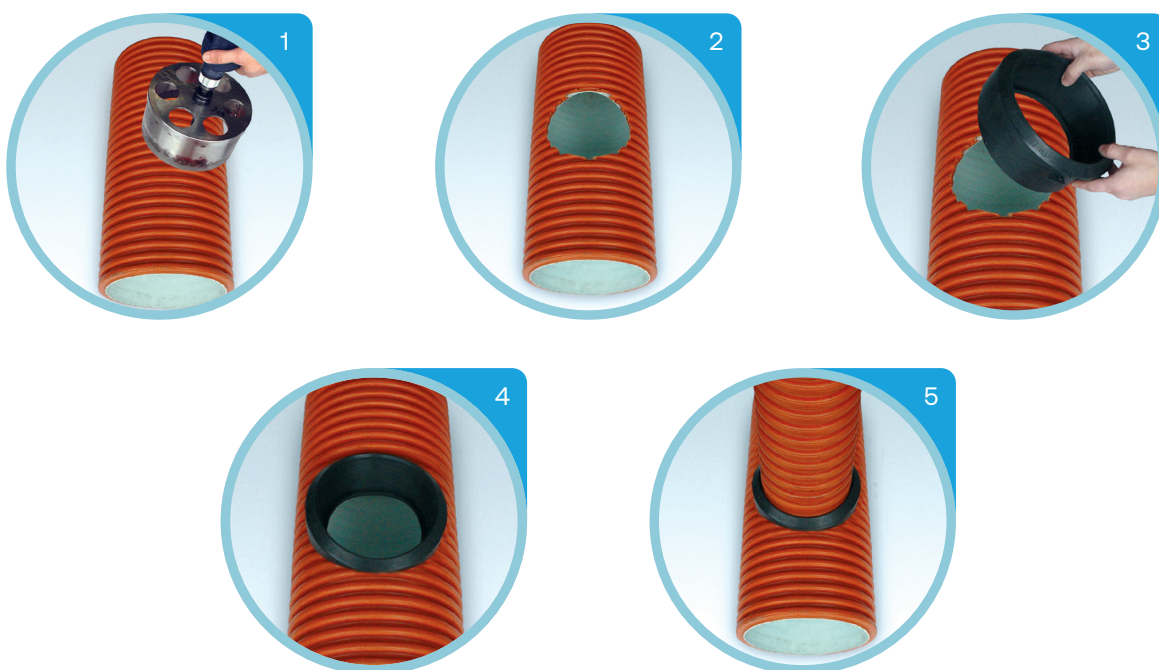


Product Code	LPS XXX-XXX
Description	Lateral Pipe Seal
Material	EPDM Rubber Seals with a different material makeup are available on request.
Lateral Pipe Deflection	2°
Pressure Rating	up to 0.5 bar / 7.25psi
Temperature Range	-50°C to 80°C constant, 100°C intermittent

Product Code	PVC/DWV Lateral Pipe Outside Diameter (mm)	Main Pipe Nominal Diameter	Max Pipe Thickness (mm)	Drilled Hole Size (mm)	Hole Saw Code
LPS110-225-400	110	225 / 250 / 315 / 400	35	127	HSK127
LPS110-630-1000		630 / 800 / 1000	70		
LPS160-300-500	160	300 / 400 / 500	44	177	HSK177
LPS160-630-1000		630 / 800 / 1000	67		
LPS160-1200		1200	75		
LPS200-315	200	315	35	208	HSK208
LPS200-400-500		400 / 500	45		
LPS200-630-1000		630 / 800 / 1000	75		
LPS200-1200		1200	80		
LPS250-400-500	250	400 / 500	50	263	HSK263
LPS250-630-1000		630 / 800 / 1000	75		
LPS315-630-1000	315	630 / 800 / 1000	85	320	HSK320
LPS400-1000-1200	400	1000 / 1200	104	412	HSK412



Installation



5 easy steps

1. Using the recommended hole saw, core the main pipe for the correct size seal to be fitted. It is important that the hole is perpendicular to the pipe and the hole saw is deep enough to cut through the pipe wall in one pass. The seal requires a clean accurate hole. Fernco recommend the drill be secure on a frame.
2. Remove any burning or flashing from the edges of the hole by using a de-burring tool and wipe the inside surface clean.
3. Fold the seal and insert into the hole, allowing it to spring open, make sure it is pushed fully in the pipe and is sitting correctly within the pipe wall.
4. Measure the seal depth and mark the PVC/DWV lateral pipe.
5. Lubricate the PVC/DWV pipe and fully push into the seal using the markings as a guide.

Note: It is important that the core hole is perpendicular to the pipe.

General Information

Quality, Standards and Approvals

Fernco has been certified by the British Standards Institution (BSI) as a company of assessed capability, with quality management system which meets the requirements of BS EN ISO 9001:2015

Fernco UK, part of the Fernco Group, are the leaders in wastewater connection innovation; utilising the most advanced methods and techniques for precision-manufactured products, all of which comply with or exceed relevant British and European standards to ensure reliability and sustainability.

Environment

Fernco operate Environmental Management Systems which are certified to ISO 14001: 2015.

Supply

Fernco are proud members of the Builders Merchants Federation (BMF). All Fernco products are supplied through a national and global network of distribution and merchant partners. For stockist details, contact Fernco.

Technical Support

Hydroflow Civil have a team of product experts on hand to support all customers with technical support and advice.

Contact Hydroflow Civil:

Tel: +64 9 448 5844

Email: orders@hydroflowcivil.co.nz

Enquiries

Sales:

Tel: +64 9 448 5844

Email: orders@hydroflowcivil.co.nz