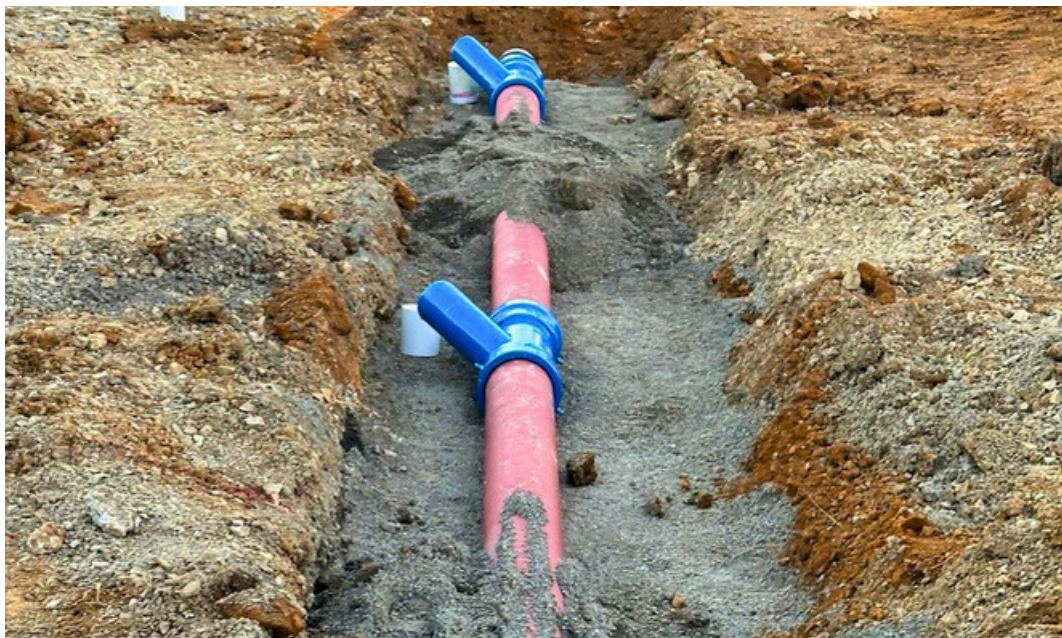


## Integral® ZINALIUM® Ductile Iron Pipe



### Features

Withstands high service pressures and external mechanical accidents, and is impervious to pollution in soil, ensuring water tightness.

Designed for all terrains, climates and situations.

No need for any welding, coating repair, or ultrasonic exam, nor specialised equipment or waiting time for the drying or cooling of assemblies

Designed with a safety reserve that securely withstands increases in flow, pressure, and surface loads of roads and buildings.

### Field of use

For gravity sewer and pressure or pumped sewer networks

Domestic waste water

Very hard raw water and irrigation

For effluents between pH4 and pH12

### Main characteristics

AS Tyton type joint in NBR (supplied by Hultec) to AS1646

External coating: ZINALIUM® alloy Zn85Al15 (400 g/m<sup>2</sup>)

Red synthetic pore sealer minimum 100 microns to AS3750.19

Internal coating: High Alumina Cement (HAC) to AS3972 type GB

In conformance to AS/NZS 2280:2014





AS/NZS PAM INTEGRAL ZINALIUM® Pipe with Tyton Type Joint  
DN100-750 DN100-750 PN 35

| Product Code | DN (mm) | Lu (m) | PN   | e (mm) | ØDE (mm) | ØID (mm) | P (mm) | ØB (mm) | Mass (kg/m) |
|--------------|---------|--------|------|--------|----------|----------|--------|---------|-------------|
| DIP35100INT  | 100     | 5.75   | PN35 | 4.9    | 122      | 124.7    | 89     | 162.7   | 17.5        |
| DIP35150INT  | 150     | 5.75   | PN35 | 5.0    | 177      | 179.7    | 89     | 218.3   | 26.1        |
| DIP35200INT  | 200     | 5.75   | PN35 | 5.0    | 232      | 235.2    | 102    | 278.2   | 34.8        |
| DIP35225INT  | 225     | 5.75   | PN35 | 5.0    | 259      | 262.1    | 102    | 303.4   | 39.2        |
| DIP35250INT  | 250     | 5.75   | PN35 | 5.2    | 286      | 289.0    | 102    | 329.5   | 44.6        |
| DIP35300INT  | 300     | 5.75   | PN35 | 5.9    | 345      | 348.2    | 102    | 391.4   | 59.0        |
| DIP35375INT  | 375     | 5.75   | PN35 | 7.0    | 426      | 430.5    | 127    | 487.3   | 84.4        |
| DIP35450INT  | 450     | 5.75   | PN35 | 8.1    | 507      | 511.2    | 127    | 570.7   | 112.7       |
| DIP35500INT  | 500     | 5.75   | PN35 | 8.8    | 560      | 564.3    | 127    | 626.0   | 133.0       |
| DIP35600INT  | 600     | 5.75   | PN35 | 10.2   | 667      | 671.2    | 135    | 751.4   | 178.9       |
| DIP35750INT  | 750     | 5.75   | PN35 | 12.3   | 826      | 830.2    | 157    | 912.7   | 268.2       |

Note: Dimensions and mass are given as nominal value Higher pressure is available for Flange Class

## Legend

DN : nominal diameter

Lu : laying length, in m

PN : pressure rating according to AS/NZS 2280:2014

e: nominal thickness according to AS/NZS 2280:2014, in mm

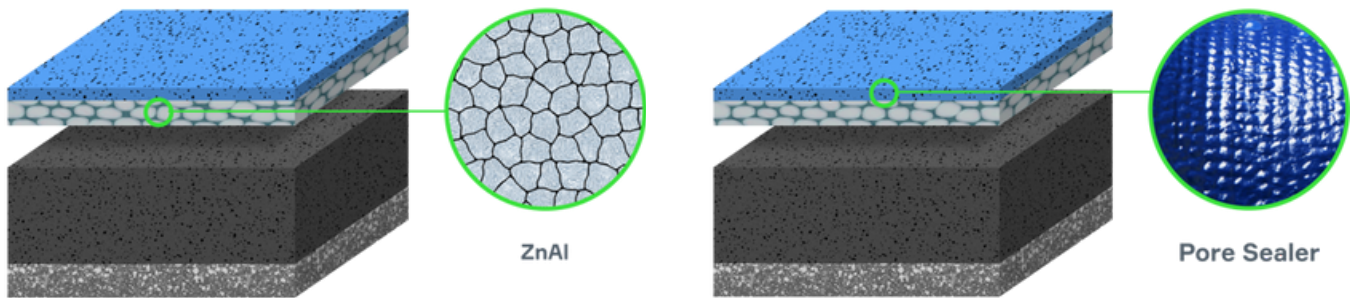
ØDE : external nominal diameter of the barrel according to AS/NZS 2280:2014, in mm

ØDI : internal nominal diameter of the socket, in mm

P : nominal depth of the socket, in mm

ØB : nominal external diameter of the socket, in mm

Mass : mean total mass per meter



|                          |   |
|--------------------------|---|
| Available Diameter Range | DN100, 150, 200, 225, 250, 300, 375, 450, 500, 600, 750   |
| Pressure Rating          | PN20 – Green mark on socket face<br>PN35 – Red mark on socket face<br>Flange Class – Blue mark on socket face |
| Joints                   | Automatic push in Tyton type rubber ring joint - DN100 to 300. Contact us for other sizes.                    |
| Deflection               | DN100-250: 3.5°<br>DN300-600: 2.5°<br>DN750: 1.0°   |
| External Coating         | The external & socket area is coated with a 'red' synthetic coating   |
| Internal Coating         | High Alumina Cement (HAC)   |
| Length                   | DN100 to DN750: L=5.75m   |

